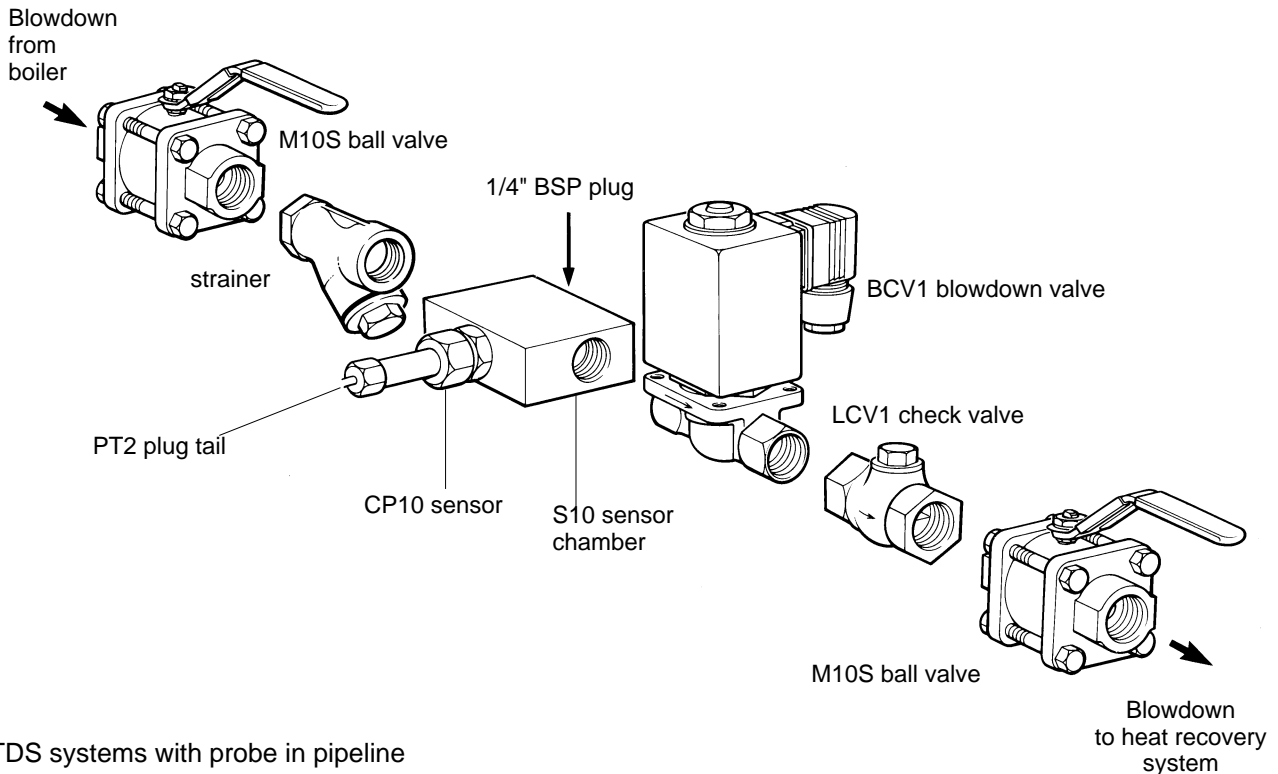


spirax/sarco®

Recommended Pipeline Components for BCS1 Blowdown System



- For TDS systems with probe in pipeline
- System with standard BCV1 blowdown valve suitable for:
 - boiler pressures up to 203 psig
 - blowdown rates up to 1,298 lb/h
- System with UL Listed BCV1 blowdown valve suitable for:
 - boiler pressures up to 130 psig
 - blowdown rates up to 1,050 lb/h

Description

The recommended BCS1 pipeline components listed below will enable straightforward installation of a TDS control system where the probe assembly is to be mounted in the pipeline, rather than directly in the boiler shell.

Installation

Items have been selected for straightforward installation in accordance with the Installation and Maintenance Instructions provided with each component.

The recommended BCS1 pipeline installation consists of the following items: -

Qty	Description	Materials	Stock#
1	S10 Sensor Chamber (1/2" NPT)	Stainless Steel	4032090
1	CP10 Sensor & gasket (UL Listed)	Stainless steel body & pin, PEEK plastic insulator	4030100
1	PT2 Plug tail (3/8" BSP, UL Listed)	Brass body	0870396
1	LCV1 Lift check valve (1/2" NPT)	Bronze	293190
1	Y type strainer (1/2" NPT, 20 mesh)	Cast Iron	60310
1	Blowoff plug for strainer (3/8" NPT)	Forged steel	48846
2	Model 10S Ball valves (1/2" NPT)	Zinc plated forged carbon steel	3397310
Either 1	BCV1 (120v, UL Listed, CSA)	Brass body, stainless steel seat, PTFE seal	4034098
Or 1	BCV1 (120v, Standard version)	Brass body, stainless steel seat, PTFE seal	4034097